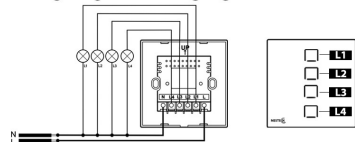


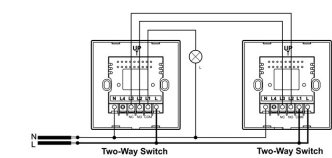
## Wiring

Push wire firmly into terminals and tighten terminal screws so that wires are held securely. No bare wires should protrude from the terminals. Ensure correct wires are connected to the correct terminals, if incorrectly wired, this could damage the switch.

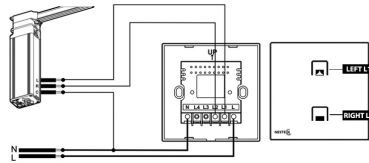
### Wiring Diagram of 1- 4 gang switches



### Wiring Diagram of 1gang two-way switch




### Wiring Diagram of curtain switch



### Switching Electrical Characteristics

|                   |   |
|-------------------|---|
| Cover             | Glass panel with RGB LED indicator                    |
| Input Voltage     | 110-250VAC 50/60Hz                                    |
| Max. Output Power | 600W / 3A   |
| Works with        | Traditional, Fluorescent, Energy savers and LED bulbs |
| Lifetime          | 1000000   |
| Temperature       | -25 °C ~ +60 °C                                       |
| Humidity          | ≤ 95%   |
| Size              | 86x86x33 mm   |

### Logotype

 This product is compliant with all relevant European standards. When sorting your waste, please observe the disposal regulations in force. Please place your waste in the facilities provided for that purpose and with all due respect for the environment. This product must be used indoor only.



### After Sales

[www.nestech-automation.com](http://www.nestech-automation.com) section "support"  
[contact@nestech-automation.com](mailto:contact@nestech-automation.com)

For more information, please visit  
[www.nestech-automation.com/support](http://www.nestech-automation.com/support)

NESTECH

NESTECH  
Smart Switch

Product Instruction

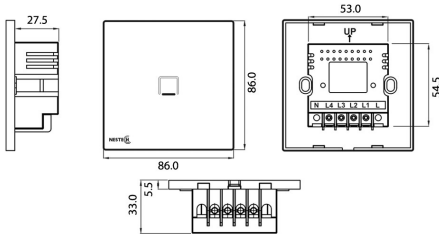
## Installation Warnings

### BEFORE COMMENCING INSTALLATION ISOLATE YOUR MAINS ELECTRIC SUPPLY

Read the instruction carefully before starting the installation process and keep them for future reference. This product must be installed by a qualified electrician.

1. this product should be installed after shutting off the general power supply.
2. the glass panel can NOT be put on directly with the power on. Until you have finished all the installation, then you can turn on the general power.
3. the Max Power is 300W/Gang. Do not overload to use this product.

## Smart Switch Dimensions (mm)

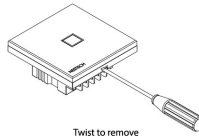


## Installation

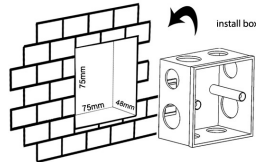
Smart switch can be installed on the wall in two different methods depend on the back box type. (EU/UK).

### UK Style :

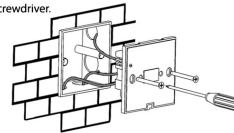
**Step 1:** Remove the glass panel of a smart light switch: Using a small flat screwdriver remove the front cover by placing the screw driver in the location notch on the bottom part of the cover and twist to unclip the cover.



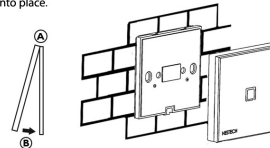
**Step 2:** Dig a square hole as the size 76x76x49 mm on the wall. Put the 78 mm install box in the hole, buried with cement.



**Step 3:** Wiring and fix screws (see wiring instructions overleaf): Push wires firmly into terminals and tighten terminal screws so that wires are held securely. No bare wires should protrude from the terminals. Ensure correct wires are connect to the correct terminals, if incorrectly wired, this could damage the switch. Use the screws supplied to attach switch to backbox using a flat head screwdriver.



**Step 4:** Re-attach the glass panel: Align the glass panel over the switch (A) and firmly push (B) to click into place.



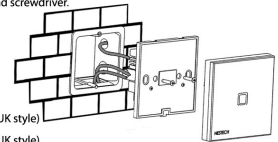
**Step 5:** Power on: Ensure the glass is attached before turning the power is on, wait 10 seconds for the switch to power up, then touch the panel to turn on the light.

### EU Style :

**Step 1:** (same as step 1 in UK style)

**Step 2:** Dig a square hole as the size 58x58x48 mm on the wall. Put the 60 mm install box in the hole, buried with cement.

**Step 3:** Wiring and fix screws (see wiring instructions overleaf): Push wires firmly into terminals and tighten terminal screws so that wires are held securely. No bare wires should protrude from the terminals. Ensure correct wires are connect to the correct terminals, if incorrectly wired, this could damage the switch. Use the screws supplied to attach switch to backbox using a flat head screwdriver.



**Step 4:** (same as step 4 in UK style)

**Step 5:** (same as step 5 in UK style)